



Success with Louisiana Energy Code

Techtips for Builders/Trades & Code Officials

FOUNDATION

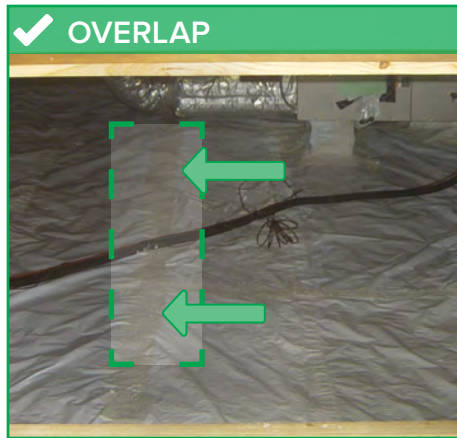




FOUNDATION TECH TIPS

The numbered steps in the Tech Tips correspond with the numbered items on the Job Complete Checklist. These tips are useful to explain code requirements to builders and trades when completing on-site inspections.

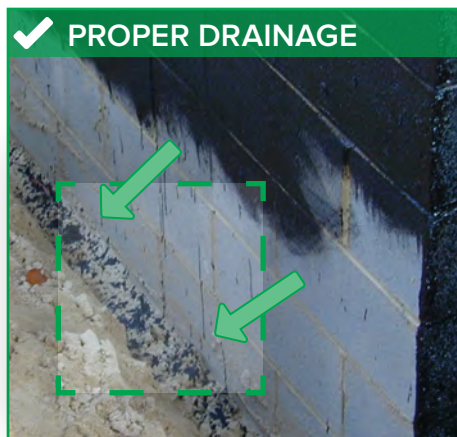
1. For crawl spaces, install 6-mil poly sheeting to overlap and extend up foundation walls at least 6".



2. Damp proof the exterior of all below-grade walls.



3. Install a drainage system along entire foundation footing of below-grade walls.



4. For exterior insulation, install without gaps, voids, misalignment or compression, and with a rigid, opaque and weather-resistant protective covering.





FOUNDATION TECH TIPS

The numbered steps in the Tech Tips correspond with the numbered items on the Job Complete Checklist. These tips are useful to explain code requirements to builders and trades when completing on-site inspections.

5. For exterior insulation, install to meet Louisiana Energy Code insulation levels.^a

CLIMATE ZONE	BASEMENT WALL ^c	CRAWL SPACE WALL ^c	SLAB
Zone 2	R-0	R-0	0
Zone 3	R-5/13 ^f	R-5/13	0

- a. R-values are minimums. When insulation is installed in a cavity that is less than the label or design thickness of the insulation, the installed R-value of the insulation shall not be less than the R-value specified in the table.
- c. The first R-value applies to continuous insulation, the second to framing cavity insulation; either insulation meets the requirement.
- f. Basement wall insulation is not required in warm-humid locations as defined by Figure N1101.2 and Table N1101.2.

