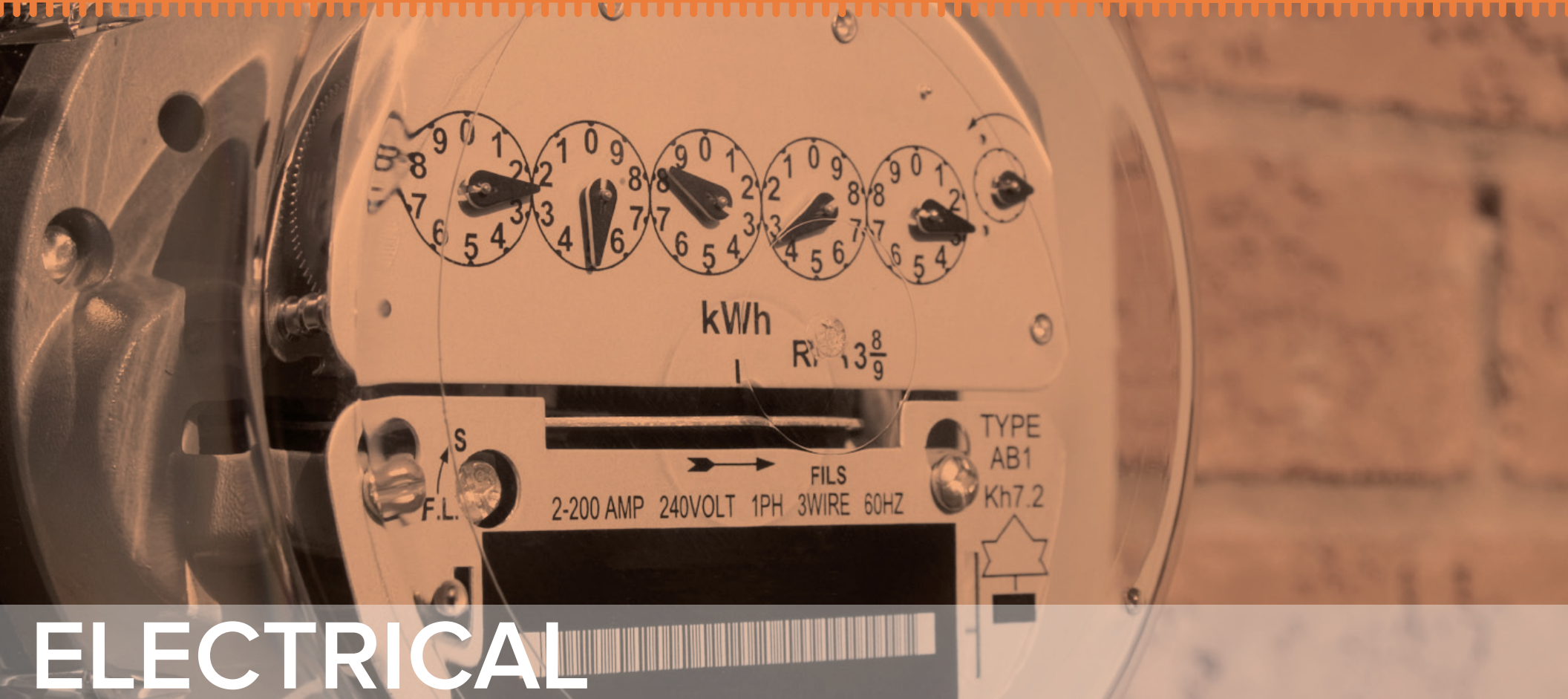


# SUCCESS WITH 2012 IECC TEXAS & OKLAHOMA

Recommended Practices for Optimized Energy Savings  
*for Builders & Trades*



# ELECTRICAL





# JOB READY ELECTRICAL

# SUCCESS WITH 2012 IECC CODE



N/A

1. For walls separating conditioned and unconditioned space, framing allows for the required R-value, has a top plate, bottom plate and an exterior air barrier.

2. For walls that will not have an interior finish and are separating conditioned and unconditioned spaces, wall cavities are insulated and an interior air barrier is installed.

3. All dropped ceilings/soffits, shafts and chases are capped with an air barrier and air sealed.

4. Selected bath fans will pull at least 50 CFM intermittently or 20 CFM continuously when installed and will meet efficiency requirements.

5. Ensure work site is clean and construction materials are properly stored before proceeding.

## Builder Verification



Stop work until details are corrected.

Proceed without corrections.

The sub-contractor who signs and completes this form is doing so to the best of his/her knowledge and should not be held legally responsible for work completed by other organizations. The intent of this form is to ensure job sites are ready before beginning work.

Signature

Date



## JOB COMPLETE ELECTRICAL

## SUCCESS WITH 2012 IECC CODE



N/A

1. Cut all holes cleanly and no more than 1 inch larger than the penetrating object.

2. Air seal electrical penetrations between conditioned and unconditioned space. Use fire-rated sealants where applicable.

3. Install recessed lighting fixtures that are insulation-contact rated (IC), sealed to drywall with caulk foam or gasket and are airtight or are located in an airtight sealed box.

4. Coordinate bath fan exhaust duct direction with HVAC Contractor.

5. Install high-efficacy lamps (e.g. CFLs, LEDs, fluorescent) in 75% of light fixtures.

6. Ensure work site is clean and construction materials are properly stored before proceeding.

### Certification

The sub-contractor who signs and completes this form is doing so to the best of his/her knowledge and should not be held legally responsible for work completed by other organizations. The intent of this form is to ensure job sites are ready before beginning work.

Name

Company

Signature



## CODE COMPARISON ELECTRICAL

## SUCCESS WITH 2012 IECC CODE

### Job Ready

<b>1</b>	<b>2012 IECC Table 402.1.1: Insulation levels</b>
<b>2</b>	<b>2012 IECC Table 402.4.1.1: Air barrier and insulation installation</b>
<b>3</b>	<b>2012 IECC Table 402.4.1.1: Air barrier and insulation installation</b>
<b>4</b>	<b>2012 IRC M1507.3: Exhaust fan rate, 2012 IECC Table R403.5.1: Mechanical System Fan Efficacy</b>
<b>5</b>	None

### Job Complete

<b>1</b>	<b>2012 IECC Table 402.4.1.1: Air barrier and insulation installation</b>
<b>2</b>	<b>2012 IECC Table 402.4.1.1: Air barrier and insulation installation</b>
<b>3</b>	<b>2012 IECC 402.4.4: Recessed lighting</b>
<b>4</b>	None
<b>5</b>	<b>2012 IECC 404.1: Lighting</b>
<b>6</b>	None