

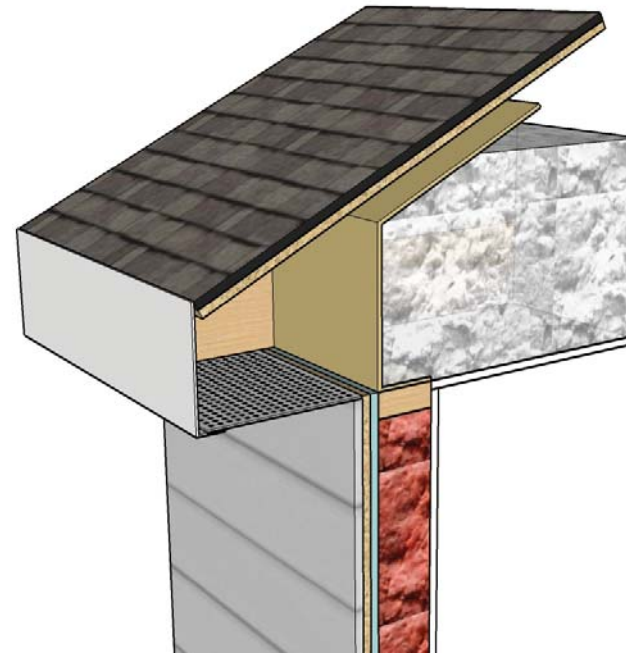


CRITICAL DETAIL: WIND BAFFLE INSTALLATION

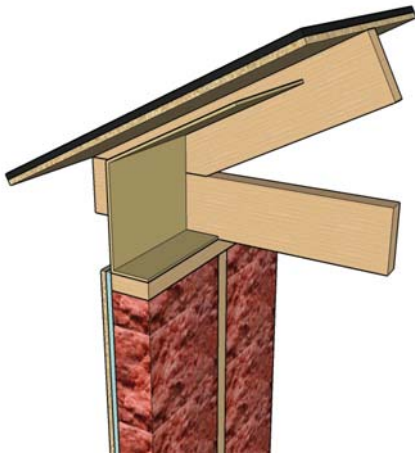
SUCCESS WITH AFFORDABLE HOUSING

SystemVision

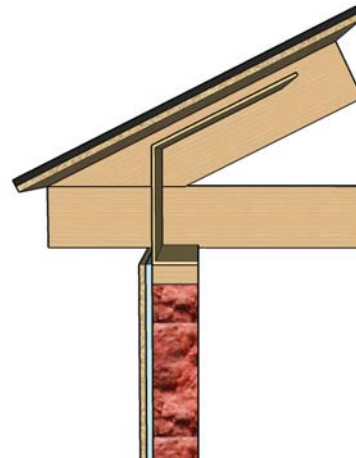
- In vented roof and attic assemblies, install insulation baffles along the perimeter of the attic insulation. These should be installed to ensure proper attic ventilation and maximum insulation above the top plate of the exterior wall.
- Raised heel trusses or equivalent will allow at least 10 in. of space between the roof deck and the exterior edge of the top plate. Install the baffle so that it rises vertically at least 8-1/2 in. from the outside edge of the top plate, stopping to allow for the appropriate space for ventilation (usually 1-1/2 in.) before the roof deck.
- Insulation baffles can be made from corrugated cardboard, foam or plastic. OSB or other sheathing materials may also be used as the insulation baffle. Reusing cardboard from the job site is both a way to save the cost of purchasing baffles as well as reduce your end waste cost.
- Conventional cardboard baffles come perforated at the height (usually 3-1/2 in.) needed for the proper fold for conventional trusses. Ensure the baffles in your **SystemVision** home are folded at 8-1/2 in. by notching the entire stack of baffles at the correct measurement. The installers will have a reference when placing the baffle.



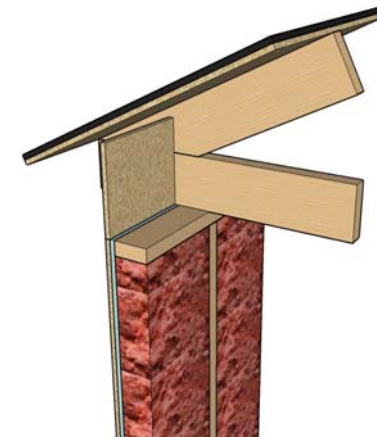
Baffle After Completion



Baffle Installed During Insulation



Baffle Section



Alternative to a Typical Cardboard Baffle